

DREW
MANDEL
ARCHITECTS

19 DUNCAN STREET, SUITE 405
TORONTO, ONTARIO M5H 3H1

t. 416.260.8373
f. 416.260.0480
e. info@drewmandelarchitects.com

Contractor must check and verify all dimensions on the job, and report any discrepancies to the Architect before proceeding with the work.
Do not scale this drawing.

REVISIONS AND ISSUES

REV	DESCRIPTION	DATE
00	ISSUED FOR ZBA	DEC. 21 2012
00	ISSUED FOR SPA	DEC. 21 2012
01	ISSUED FOR REVIEW	APR. 15, 2014
02	ISSUED FOR SPA	MAY 16, 2014
02	ISSUED FOR ZBA	MAY 16, 2014
03	ISSUED FOR SETTLEMENT DISCUSSN	FEB. 4, 2015
04	ISSUED FOR SETTLEMENT DISCUSSN	FEB. 6, 2015
05	ISSUED FOR SETTLEMENT DISCUSSN	FEB. 12, 2015
06	ISSUED FOR SETTLEMENT DISCUSSN	FEB. 24, 2015
07	ISSUED FOR SETTLEMENT DISCUSSN	MAR. 02, 2015
08	ISSUED FOR SETTLEMENT DISCUSSN	MAR. 20, 2015
09	ISSUED POST NORTH YORK MEETING	MAR. 27, 2015
10	ISSUED POST NORTH YORK MEETING	MAR. 31, 2015

SCALE NORTH POINT

1:100

PROJECT TITLE & ADDRESS

ROSELAWN
TOWNHOUSES

117 - 129 ROSELAWN AVENUE
TORONTO, ON
M4R 1E7
CANADA

NEW DEVELOPMENT

DATE
OCTOBER 18 2012

DRAWING TITLE

SITE PLAN

DRAWING NUMBER REVISION NUMBER

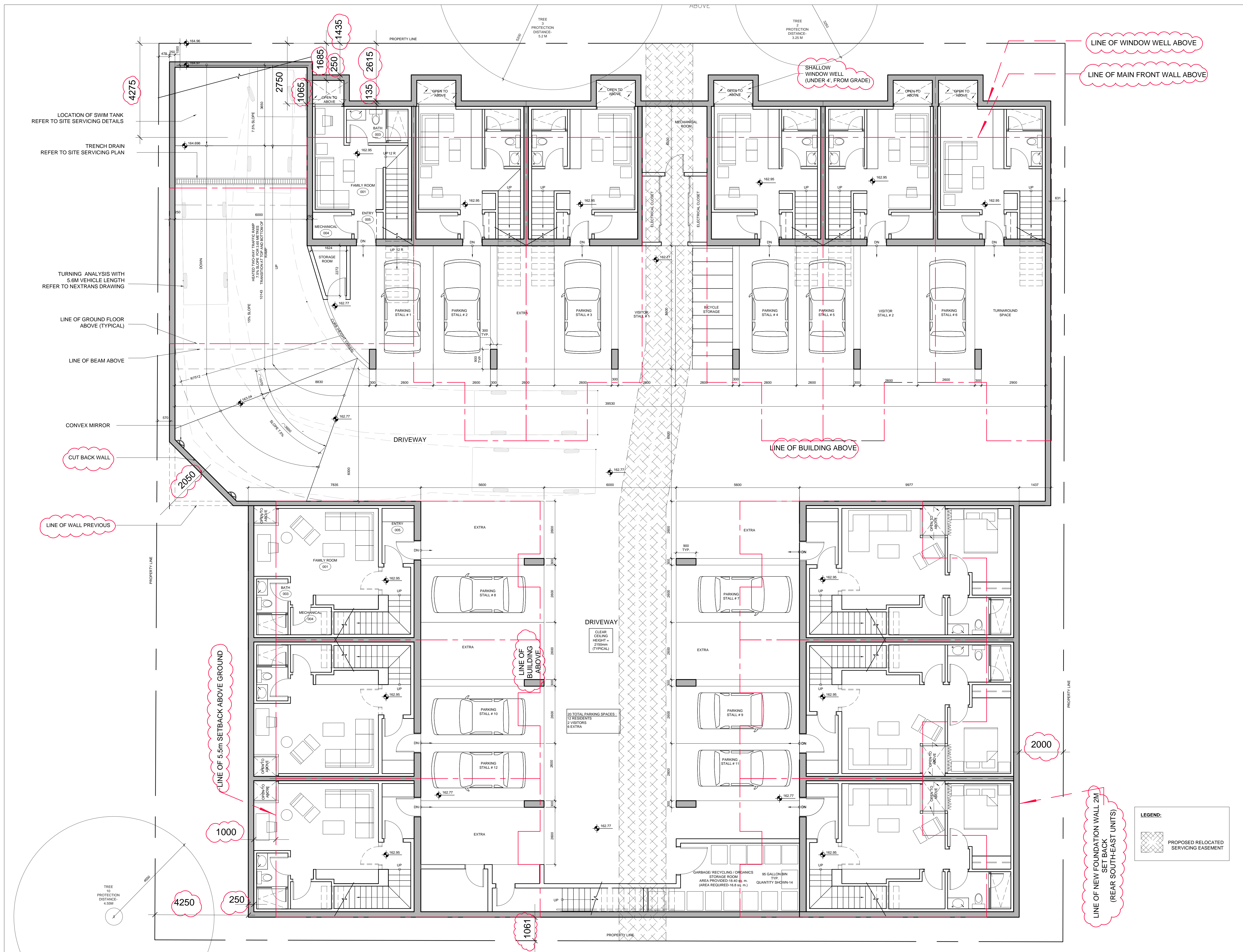
A004 00

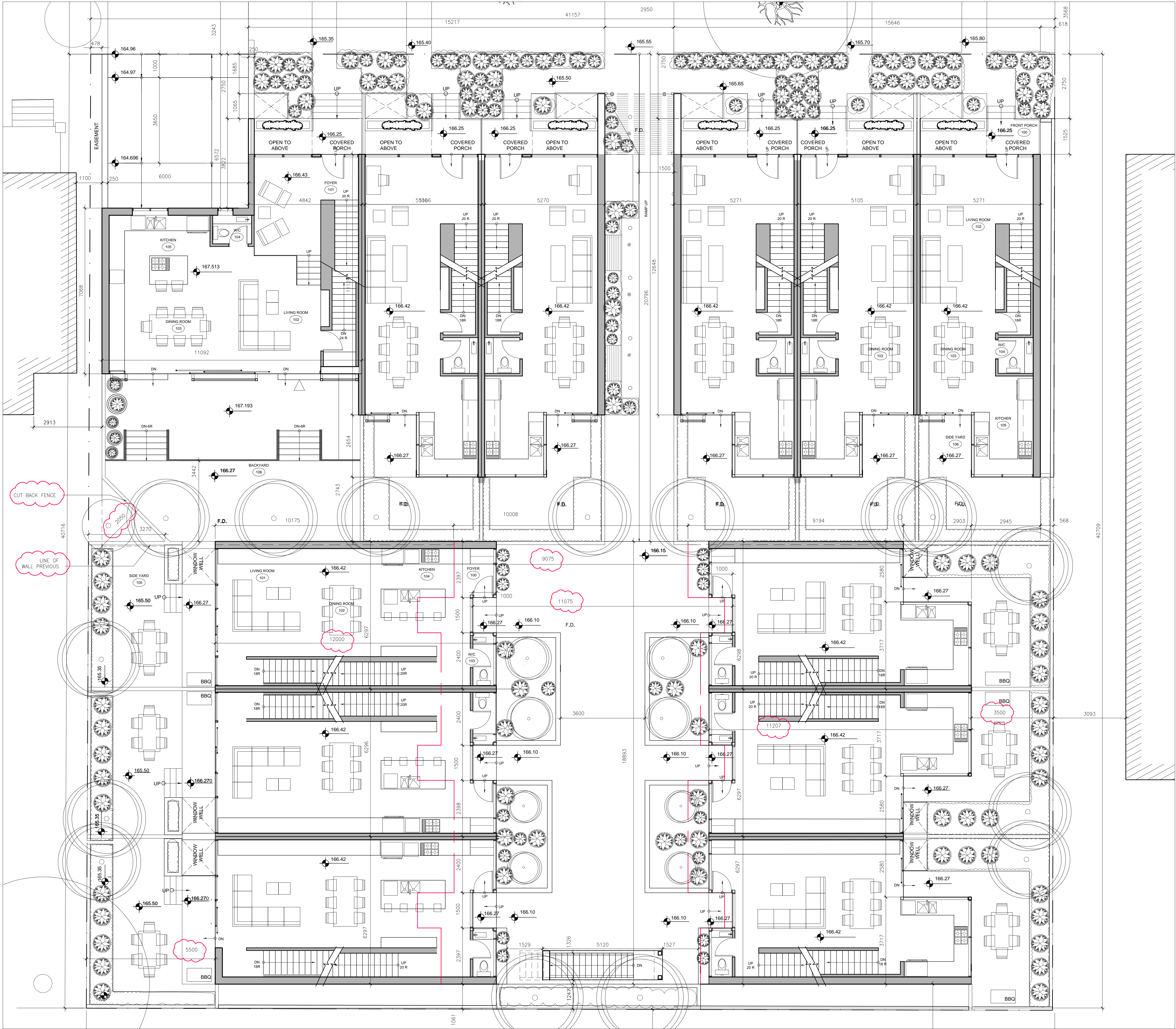


t. 416.260.8373
f. 416.260.0460
e: info@drewmandelarchitects.com

t. 416.260.8373
f. 416.260.0460
e: info@drewmandelarchitects.com

A100	00
------	----





DREW
MANDEL
ARCHITECTS

19 DUNCAN STREET, SUITE 405
TORONTO, ONTARIO M5H 3H1

T: 416.260.8373
F: 416.260.0460
E: info@drewmandelarchitects.com

Contractor must check and verify all dimensions on the job, and report any discrepancies to the Architect before proceeding with the work.
Do not scale this drawing.

REVISIONS AND ISSUES

REV	DESCRIPTION	DATE
00	ISSUED FOR ZBA	DEC. 21 2012
01	ISSUED FOR SPA	DEC. 21 2012
01	ISSUED FOR REVIEW	APR. 15, 2014
02	ISSUED FOR REVIEW	MAY 7, 2014
03	ISSUED FOR ZBA	MAY 16, 2014
03	ISSUED FOR SPA	MAY 16, 2014
04	ISSUED FOR SETTLMT DISCUSSION	FEB. 24, 2015
05	ISSUED FOR SETTLMT DISCUSSION	MAR. 02, 2015
06	ISSUED POST NORTH YORK MEETING	MAR. 27, 2015
07	ISSUED POST NORTH YORK MEETING	MAR. 31, 2015

SCALE NORTH POINT

AS NOTED

PROJECT TITLE & ADDRESS

ROSELAWN
TOWNHOUSES

117 - 129 ROSELAWN AVENUE
TORONTO, ON
M4R 1E7
CANADA

NEW DEVELOPMENT

DATE
OCTOBER 18 2012

DRAWING TITLE

GROUND FLOOR PLAN

DRAWING NUMBER REVISION NUMBER

A101 00

DREW
MANDEL
ARCHITECTS

19 DUNCAN STREET, SUITE 405
TORONTO, ONTARIO M5H 3H1

t: 416.260.8373
f: 416.260.0460
e: info@drewmandelarchitects.com

Contractor must check and verify all dimensions on the job, and report any discrepancies to the Architect before proceeding with the work.
Do not scale this drawing.

REVISIONS AND ISSUES

REV	DESCRIPTION	DATE
00	ISSUED FOR ZBA	DEC. 21 2012
00	ISSUED FOR SPA	DEC. 21 2012
01	ISSUED FOR REVIEW	APR. 15, 2014
02	ISSUED FOR REVIEW	MAY 7, 2014
03	ISSUED FOR ZBA	MAY 16, 2014
03	ISSUED FOR SPA	MAY 16, 2014
04	ISSUED POST NORTH YORK MEETING	MARCH 31, 2015

SCALE NORTH POINT

AS NOTED

PROJECT TITLE & ADDRESS

ROSELAWN
TOWNHOUSES

117 - 129 ROSELAWN AVENUE
TORONTO, ON
M4R 1E7
CANADA

NEW DEVELOPMENT

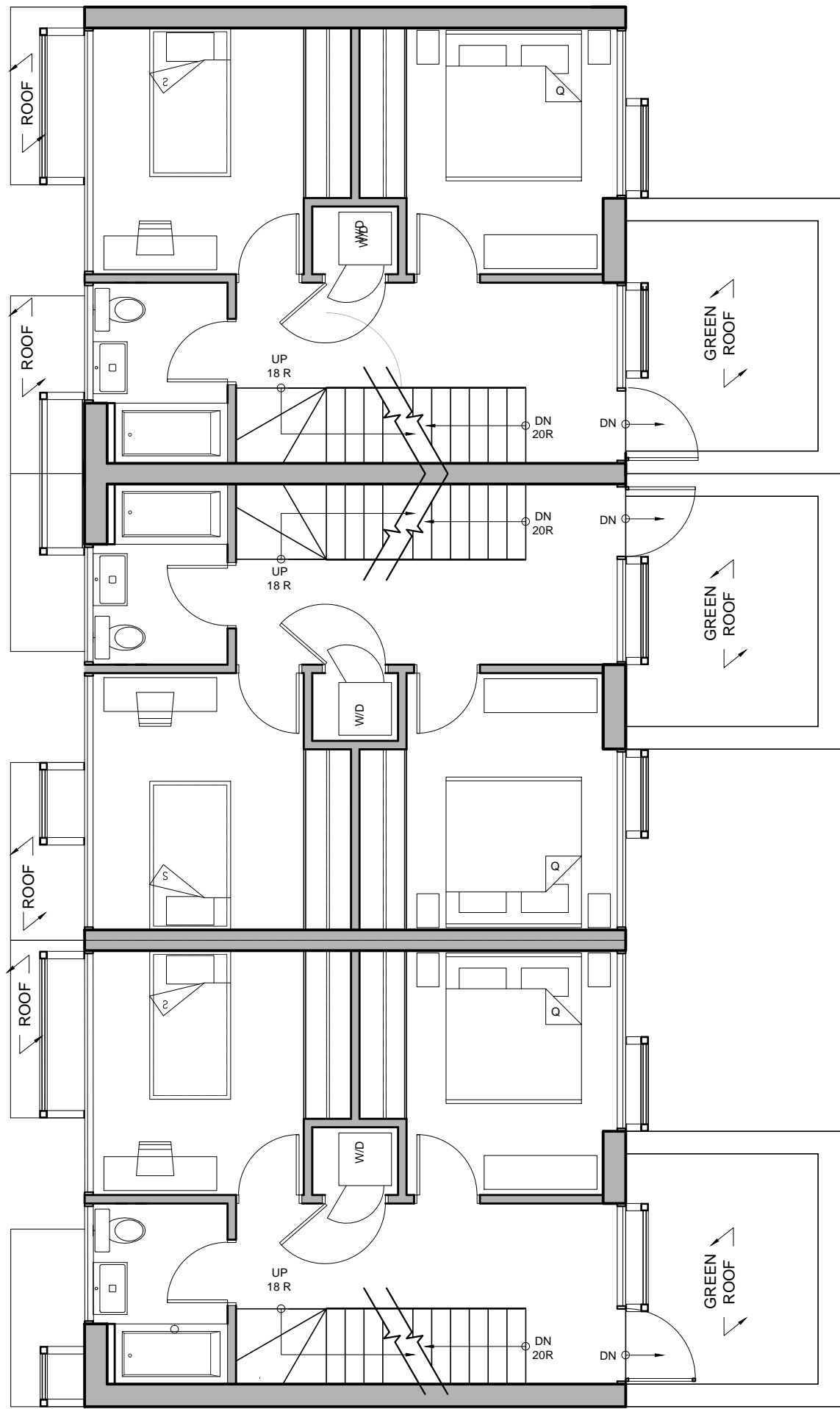
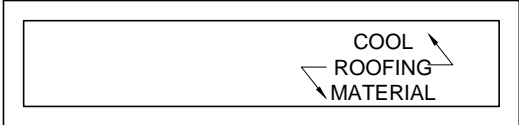
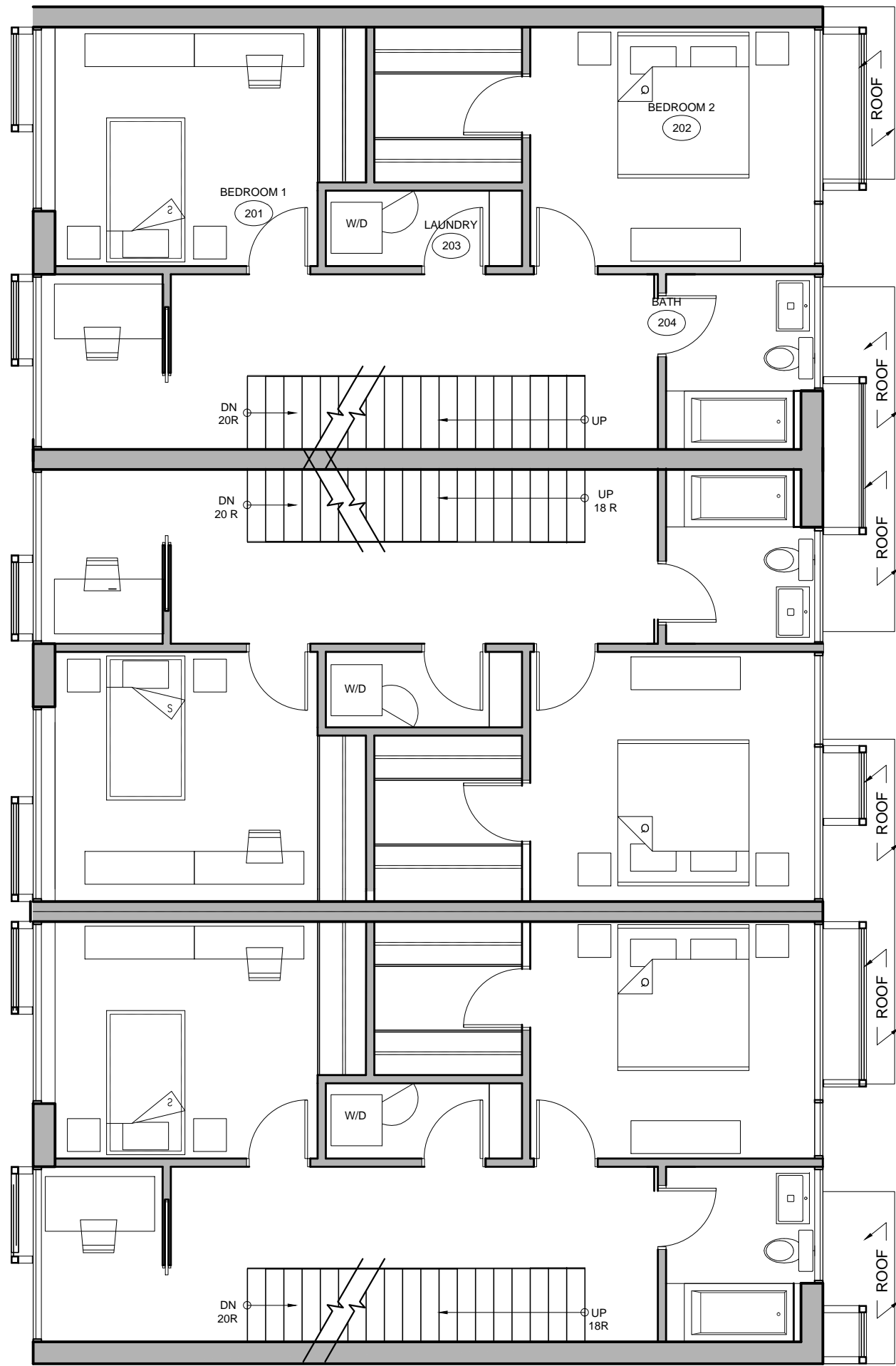
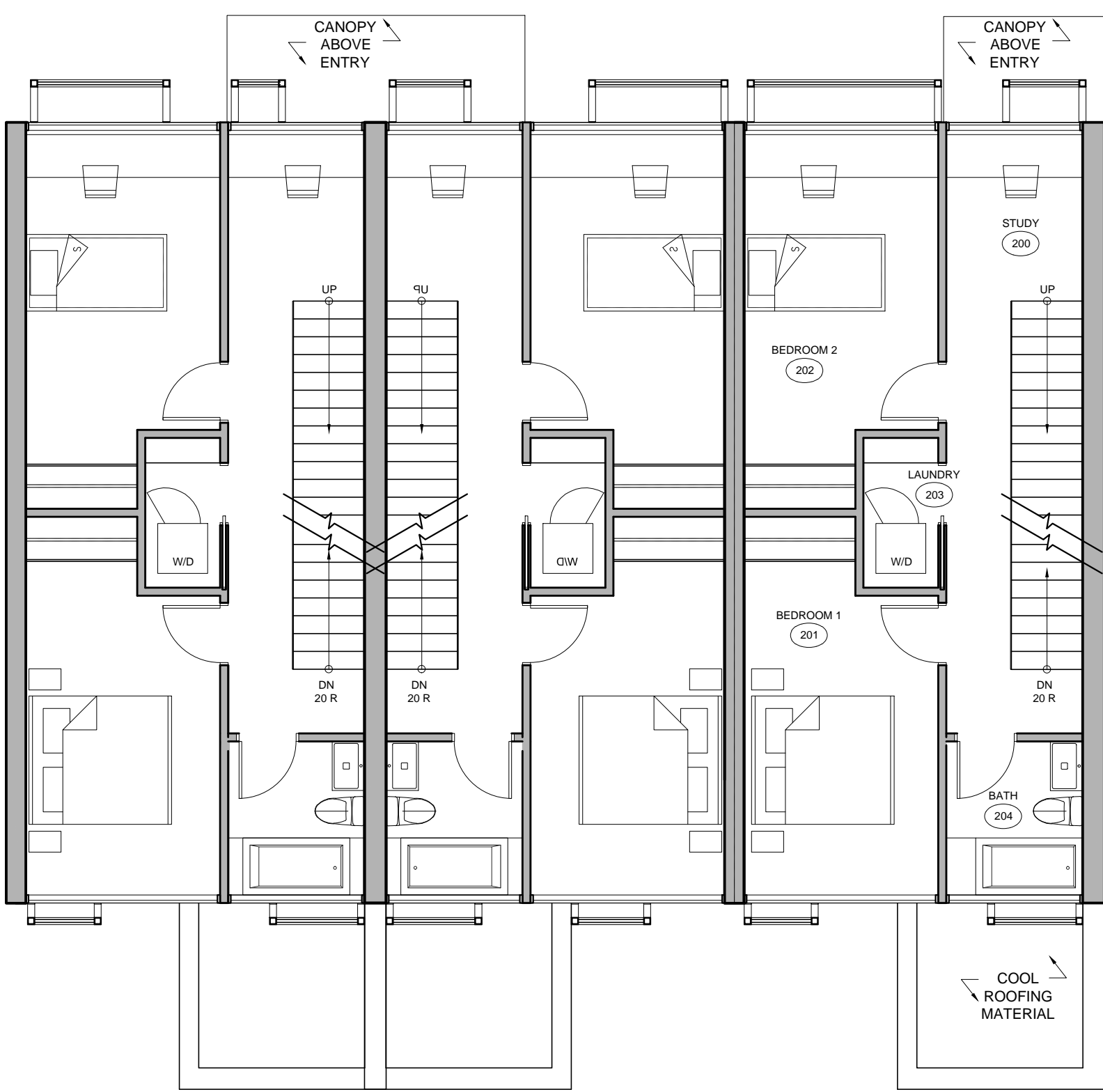
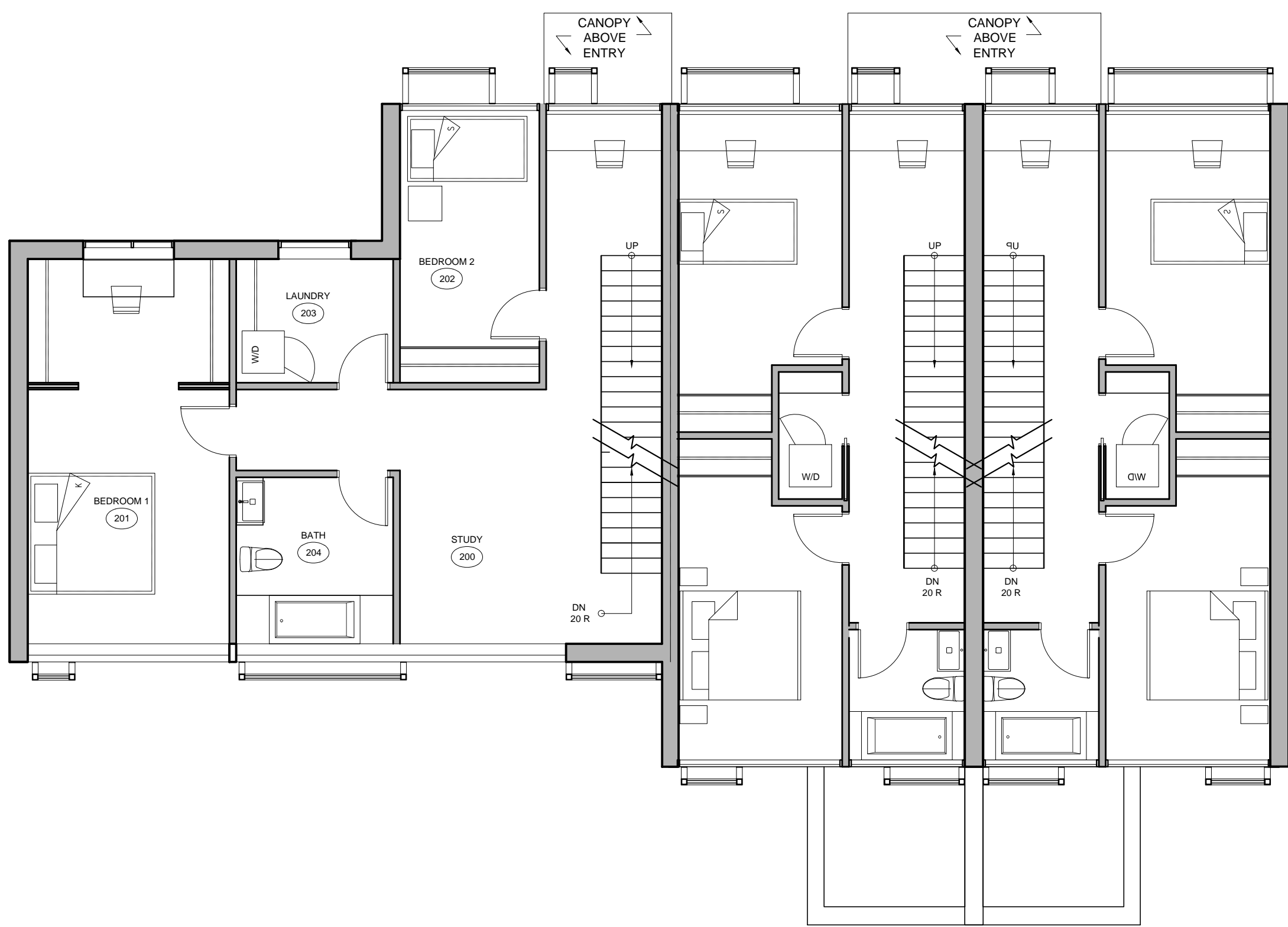
DATE
OCTOBER 18 2012

DRAWING TITLE

SECOND FLOOR PLAN

DRAWING NUMBER REVISION NUMBER

A102 00



DREW
MANDEL
ARCHITECTS

19 DUNCAN STREET, SUITE 405
TORONTO, ONTARIO M5H 3H1

T: 416.260.8373
F: 416.260.0460
E: info@drewmandelarchitects.com

Contractor must check and verify all dimensions on the job, and report any discrepancies to the Architect before proceeding with the work.
Do not scale this drawing.

REVISIONS AND ISSUES

REV	DESCRIPTION	DATE
00	ISSUED FOR ZBA	DEC. 21 2012
00	ISSUED FOR SPA	DEC. 21 2012
01	ISSUED FOR REVIEW	APR. 15 2014
02	ISSUED FOR REVIEW	MAY 7, 2014
03	ISSUED FOR ZBA	MAY 16, 2014
03	ISSUED FOR SPA	MAY 16, 2014
04	ISSUED POST NORTH YORK MEETING	MARCH 31, 2015

SCALE NORTH POINT

AS NOTED

PROJECT TITLE & ADDRESS

ROSELAWN
TOWNHOUSES

117 - 129 ROSELAWN AVENUE
TORONTO, ON
M4R 1E7
CANADA

NEW DEVELOPMENT

DATE
OCTOBER 18 2012

DRAWING TITLE

THIRD FLOOR PLAN

DRAWING NUMBER REVISION NUMBER

A103 00

DREW
MANDEL
ARCHITECTS

19 DUNCAN STREET, SUITE 405
TORONTO, ONTARIO M5H 3H1

T. 416.260.8373
F. 416.260.0480
E. info@drewmandelarchitects.com

BUILDING PERMIT ISSUANCE SHALL BE SUBJECT TO THE BUILDING PERMIT DRAWINGS NOT BEING IN CONTRAVENTION WITH THESE APPROVED PLANS AND DRAWINGS INCLUDING, BUT NOT LIMITED TO, THE EXTERIOR DESIGN OF THE BUILDING AND EXTERIOR BUILDING MATERIALS.

Contractor must check and verify all dimensions on the job, and report any discrepancies to the Architect before proceeding with the work.
Do not scale this drawing.

REVISIONS AND ISSUES

REV	DESCRIPTION	DATE
00	ISSUED FOR ZBA	DEC. 21 2012
00	ISSUED FOR SPA	DEC. 21 2012
01	ISSUED FOR REVIEW	APR. 15, 2014
02	ISSUED FOR SPA	MAY 16, 2014
02	ISSUED FOR ZBA	MAY 16, 2014
03	ISSUED FOR SETTLMT DISCUSSION	FEB. 24, 2015
04	ISSUED FOR SETTLMT DISCUSSION	FEB. 26, 2015
05	ISSUED FOR COMM. COUNCIL MEET.	APRIL 14, 2015

SCALE NORTH POINT

AS NOTED

PROJECT TITLE & ADDRESS

ROSELAWN
TOWNHOUSES

117 - 129 ROSELAWN AVENUE
TORONTO, ON
M4R 1E7
CANADA

NEW DEVELOPMENT

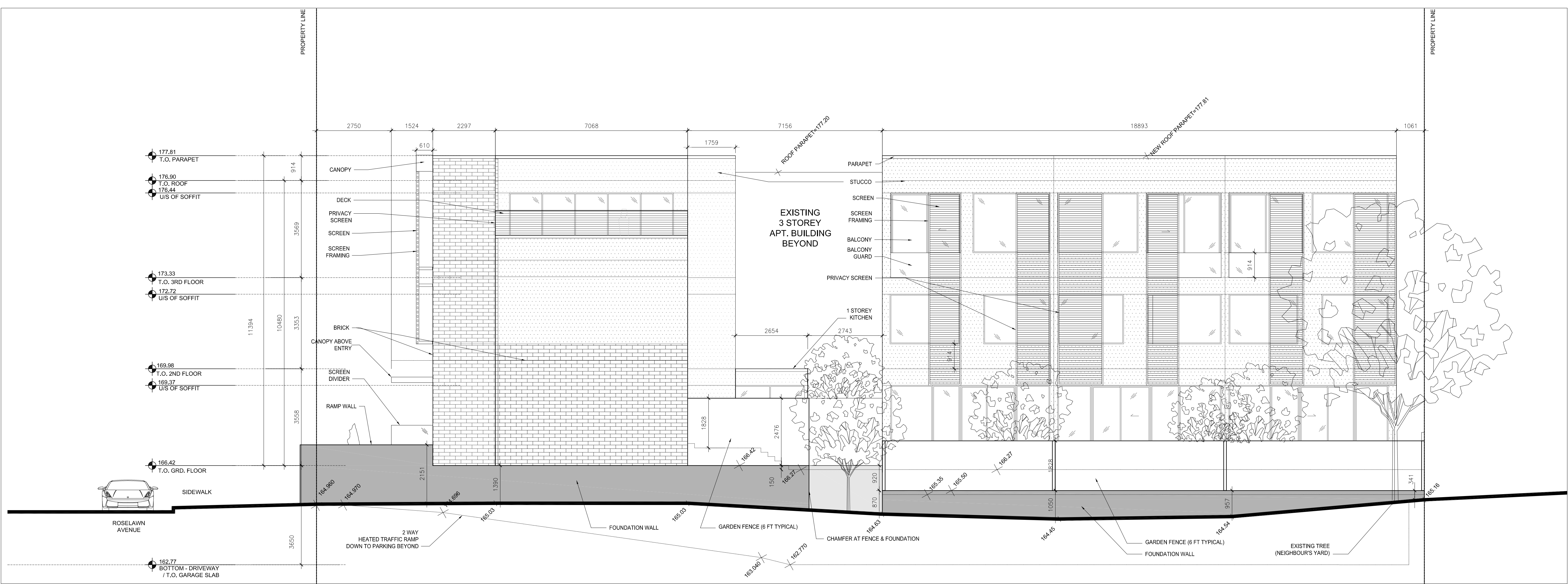
DATE
OCTOBER 18 2012

DRAWING TITLE

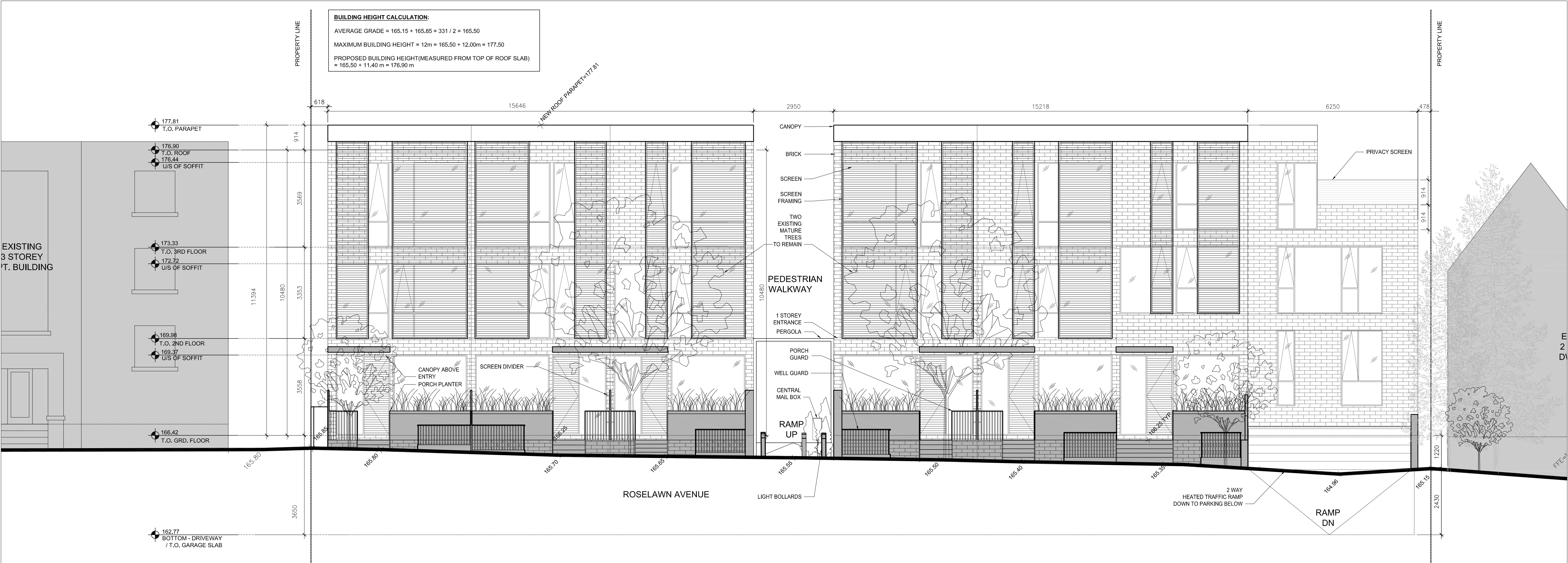
BUILDING ELEVATIONS

DRAWING NUMBER REVISION NUMBER

A200 00



2 SIDE ELEVATION (WEST)
1:75



1 FRONT ELEVATION (NORTH)
1:75

t. 416.260.8373
f. 416.260.0460
e: info@drewmandelarchitects.com

Contractor must check and verify all dimensions on the job, and report any discrepancies to the Architect before proceeding with the work.

Do not scale this drawing.

REV	DESCRIPTION	DATE
00	ISSUED FOR ZBA	MAY 28 2013
01	ISSUED FOR SPA	MAY 28 2013
01	ISSUED FOR REVIEW	APR. 15, 2014
02	ISSUED FOR SPA	MAY 16, 2014
02	ISSUED FOR ZBA	MAY 16, 2014
03	ISSUED FOR COMM. COUNCIL MEET.	APRIL 14, 2015

AS NOTED

DRAWING TITLE

A201	00
------	----



DREW
MANDEL
ARCHITECTS

19 DUNCAN STREET, SUITE 405
TORONTO, ONTARIO M5H 3H1

T. 416.260.8373
F. 416.260.0480
E. info@drewmandelarchitects.com

BUILDING PERMIT ISSUANCE SHALL BE SUBJECT TO THE BUILDING PERMIT DRAWINGS NOT BEING IN CONTRAVENTION WITH THESE APPROVED PLANS AND DRAWINGS INCLUDING, BUT NOT LIMITED TO, THE EXTERIOR DESIGN OF THE BUILDING AND EXTERIOR BUILDING MATERIALS.

Contractor must check and verify all dimensions on the job, and report any discrepancies to the Architect before proceeding with the work.
Do not scale this drawing.

REVISIONS AND ISSUES

REV	DESCRIPTION	DATE
00	ISSUED FOR ZBA	MAY 28 2013
00	ISSUED FOR SPA	MAY 28 2013
01	ISSUED FOR ZBA	APR. 15, 2014
02	ISSUED FOR SPA	MAY 16, 2014
02	ISSUED FOR ZBA	MAY 16, 2014
03	ISSUED FOR COMM. COUNCIL MEET.	APRIL 14, 2015

SCALE NORTH POINT

AS NOTED

PROJECT TITLE & ADDRESS

ROSELAWN
TOWNHOUSES

117 - 129 ROSELAWN AVENUE
TORONTO, ON
M4R 1E7
CANADA

NEW DEVELOPMENT

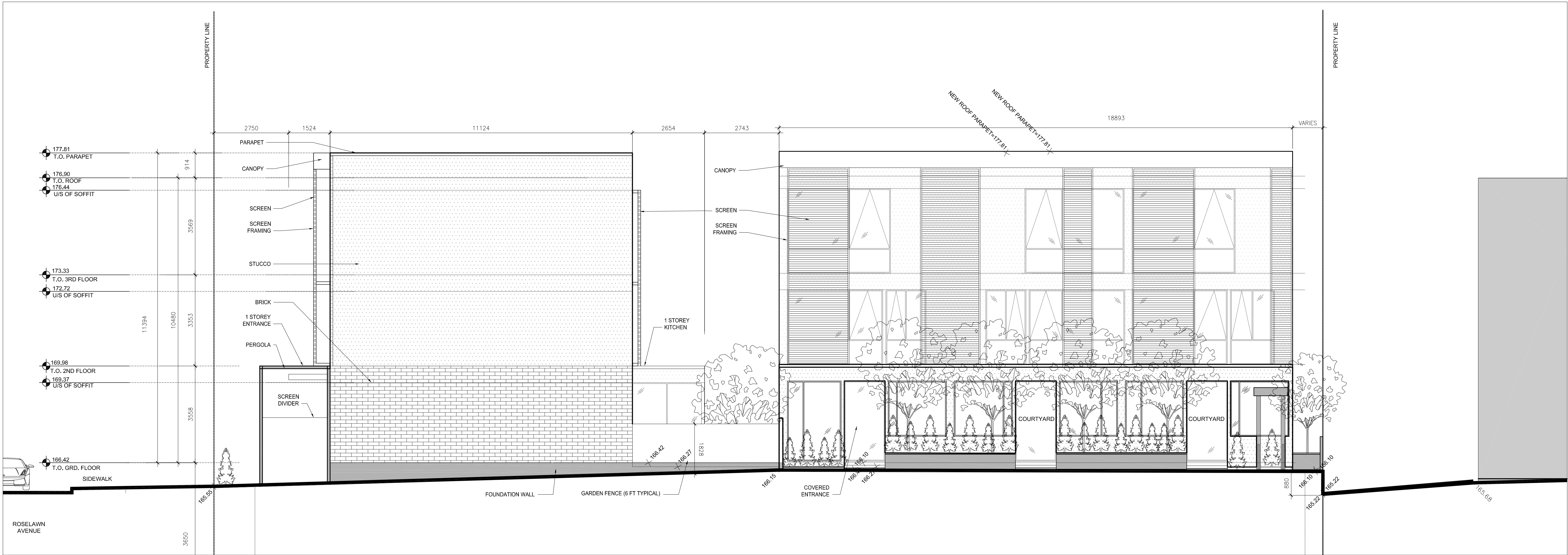
DATE
OCTOBER 18 2012

DRAWING TITLE

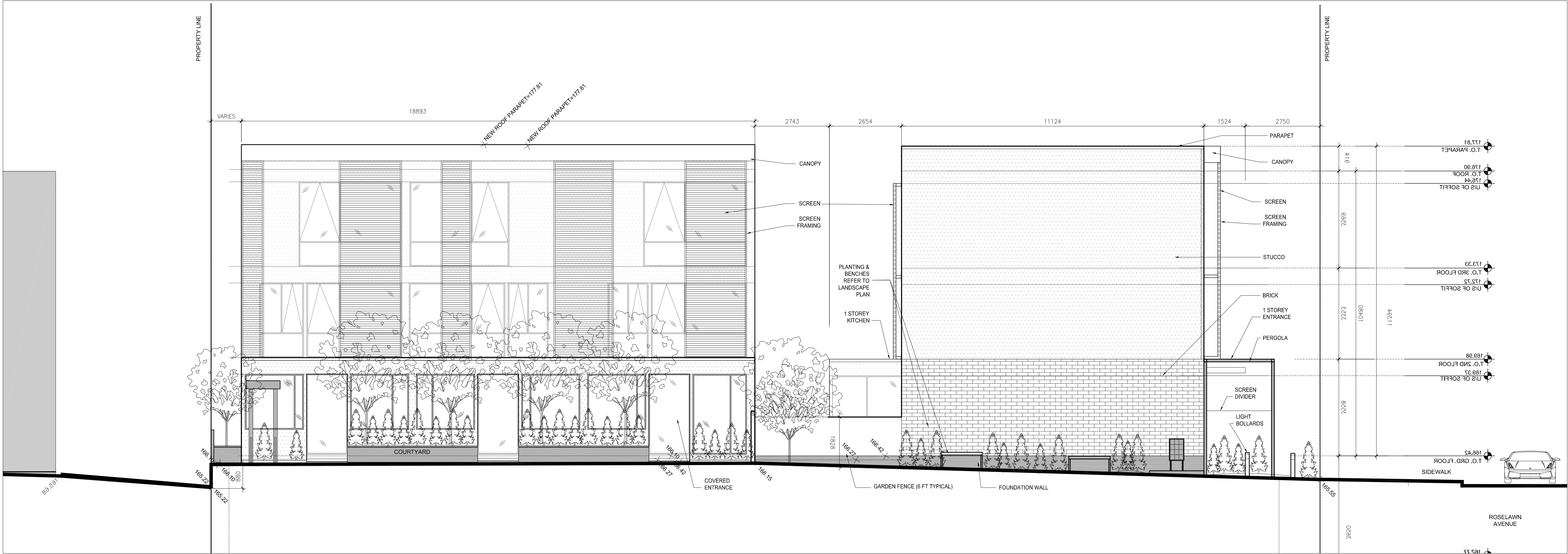
BUILDING ELEVATIONS

DRAWING NUMBER REVISION NUMBER

A202 00



1 COURTYARD ELEVATION - LOOKING EAST
1:100



2 COURTYARD ELEVATION - LOOKING WEST
1:100

DREW
MANDEL
ARCHITECTS

19 DUNCAN STREET, SUITE 405
TORONTO, ONTARIO M5H 3H1

t. 416.260.8373
f. 416.260.0480
e. info@drewmandelarchitects.com

BUILDING PERMIT ISSUANCE SHALL BE SUBJECT TO THE BUILDING PERMIT DRAWINGS NOT BEING IN CONTRAVENTION WITH THESE APPROVED PLANS AND DRAWINGS INCLUDING, BUT NOT LIMITED TO, THE EXTERIOR DESIGN OF THE BUILDING AND EXTERIOR BUILDING MATERIALS.

Contractor must check and verify all dimensions on the job, and report any discrepancies to the Architect before proceeding with the work.
Do not scale this drawing.

REVISIONS AND ISSUES

REV	DESCRIPTION	DATE
00	ISSUED FOR ZBA	DEC. 21 2012
00	ISSUED FOR SPA	DEC. 21 2012
01	ISSUED FOR REVIEW	APR. 15, 2014
02	ISSUED FOR SPA	MAY 16, 2014
02	ISSUED FOR ZBA	MAY 16, 2014
03	ISSUED FOR COMM. COUNCIL MEET.	APRIL 14, 2015

SCALE NORTH POINT

AS NOTED

PROJECT TITLE & ADDRESS

ROSELAWN
TOWNHOUSES

117 - 129 ROSELAWN AVENUE
TORONTO, ON
M4R 1E7
CANADA

NEW DEVELOPMENT

DATE
OCTOBER 18 2012

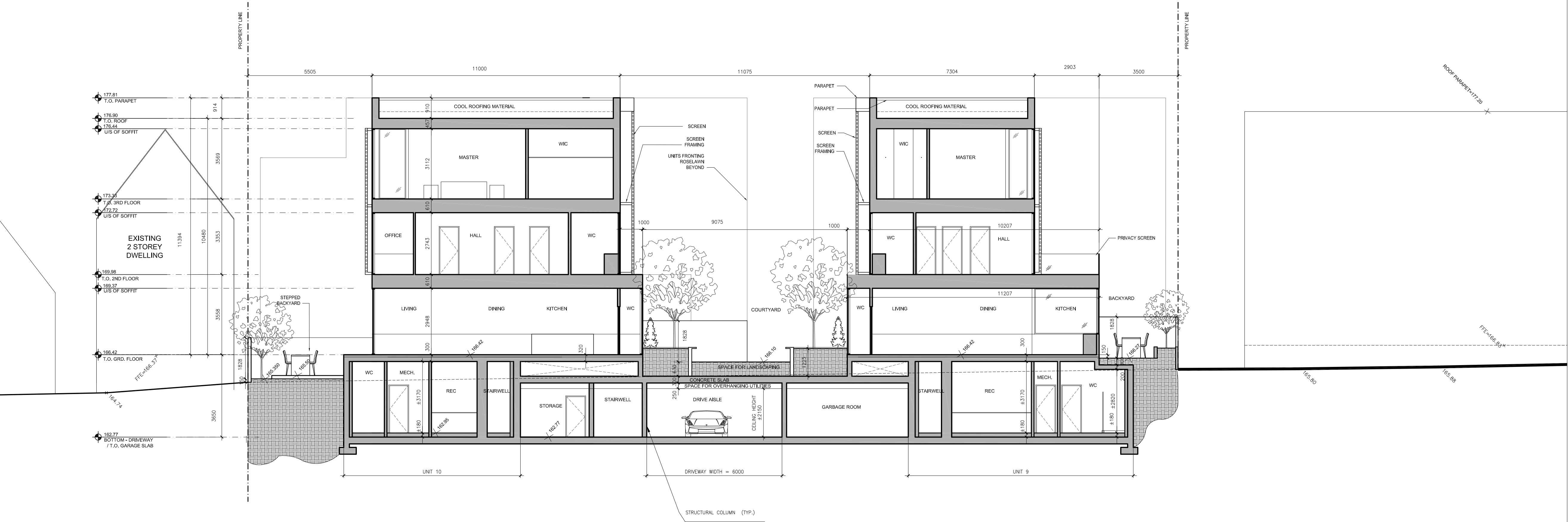
DRAWING TITLE

BUILDING SECTIONS

DRAWING NUMBER REVISION NUMBER

A301 00

2 BUILDING SECTION THROUGH BACK UNITS & BACK COURTYARD



1 BUILDING SECTION THROUGH FRONT UNITS & BACK COURTYARD
1:100

